

11

Sistemas de aperto
Sistemas de sujeción

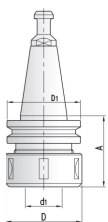


araújo&silva
ferramentas de corte

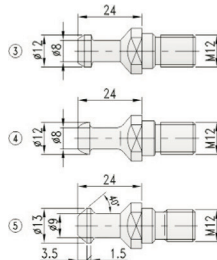
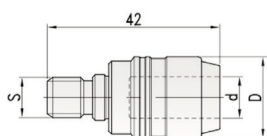
JÁ MEDIU A SUA PRODUTIVIDADE?



A Araujo&Silva, Lda. desenvolve ferramentas especiais, proporcionando aos seus clientes as soluções mais rentáveis.



Para rotação direita e esquerda
Para rotación derecha y izquierda



araújo&silva
ferramentas de corte

ESPECIALISTAS EM FERRAMENTA DE CORTE

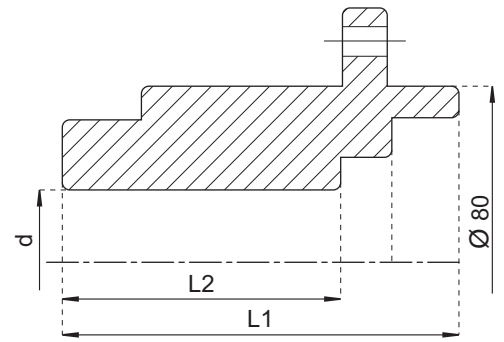
www.araujosilva.pt



L1	L2	d	TK	Ref.
90	63	35 DKN	8/M8/100 Homag, IMA, Torwegge	5090.01
97	68	40 DKN	8/M8/100 Schwabedissen, Gabbiani	5090.02

ACESSÓRIOS - Piezas de recambio

	Dim.	Ref.
Parafuso para triturador com segmentos	M8x12	P5090.01
Parafuso para triturador compact	M8x16	P5090.02

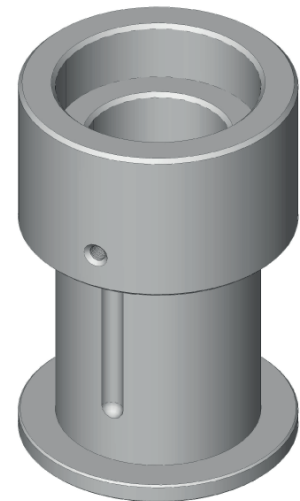


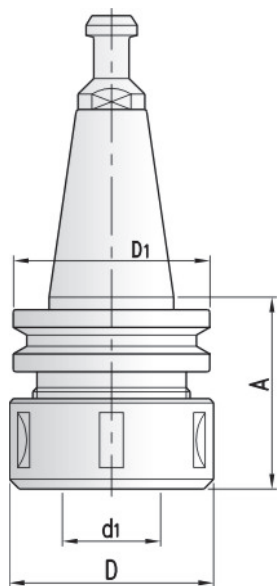
Manga de aperto 5095
Tubo con tuerca

d	D	L	l	Ref.
30	50	85	63	5095.02
	60	85	63	5095.04
	50	110	88	5095.06
	60	110	88	5095.08
35	50	85	63	5095.10
	60	85	63	5095.12
	50	110	88	5095.14
	60	110	88	5095.16
40	50	85	63	5095.18
	60	85	63	5095.20
	50	110	88	5095.22
	60	110	88	5095.24
50	60	85	63	5095.26
	60	110	88	5095.28

ACESSÓRIOS - Piezas de recambio

		Ref.
Chave de unha	Para D=50	5125.304
	Para D=60	5125.305





Para rotação direita e esquerda
Para rotación derecha y izquierda

	Pino	D	A	d1	D1	Ref.
IMA, Maka, Reichenbacher, Biesse, Alberti, Stegherr, etc.						
SK30	1	50	50	6-20(ER32)	50	3761.150.050.65
	1	63	63	6-25(ER40)		3761.150.070.65
SK40	2	60	70	6-25(462E)	63,55	3761.150.070.65E
Biesse: até 9/92						
SK30	3	50	50	6-20(ER32)	50	3761.250.050.65
	3	63	63	6-25(ER40)		3761.250.070.65
Biesse: após 9/92						
SK30	4	50	50	6-20(ER32)	50	3761.350.050.65
	4	63	63	6-25(ER40)		3761.350.070.65
ALBERTI						
SK30	5	50	50	6-20(ER32)	50	3761.450.050.65
	5	63	63	6-25(ER40)		3761.450.070.65
MASTERWOOD: até 1/99						
SK30	4	50	50	6-20(ER32)	50	3761.350.050.65
MASTERWOOD: após 1/99						
SK30	5	63	63	6-25(ER40)	50	3761.450.070.65
CMS, BIESSE						
ISO30	8	50	50	6-20(ER32)		3761.146.050.65
	8	63	57	6-25(ER40)		3761.146.057.65

PINÇA NÃO INCLUÍDA
Sin pinza

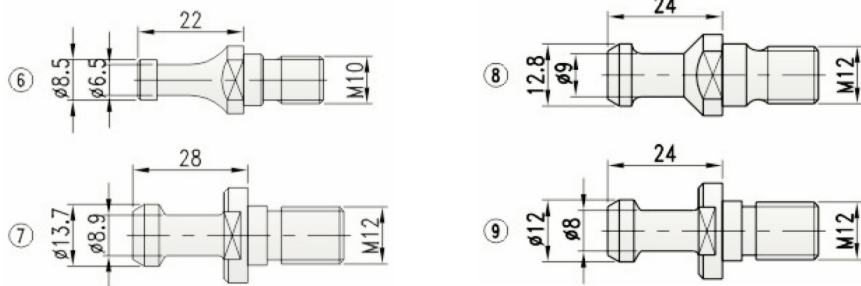
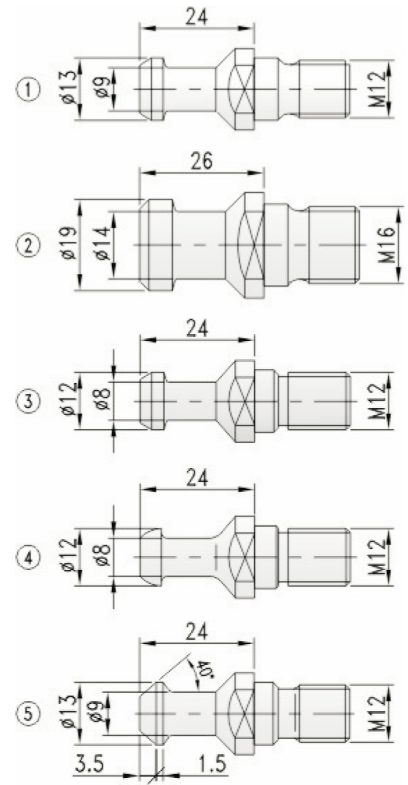
ACESSÓRIOS - Piezas de recambio

	D	Dim.	Ref.
Fêmea de aperto	50	M40x1.5(ER32)	3761.50
	63	M50x1.5(ER40)	3761.63
Chave de unha	50	45/50	5302.302
	60	58/62	5302.303





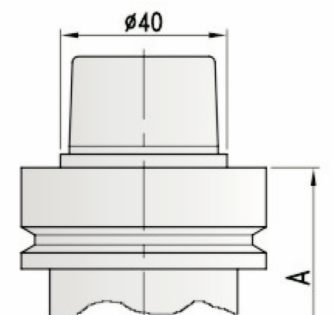
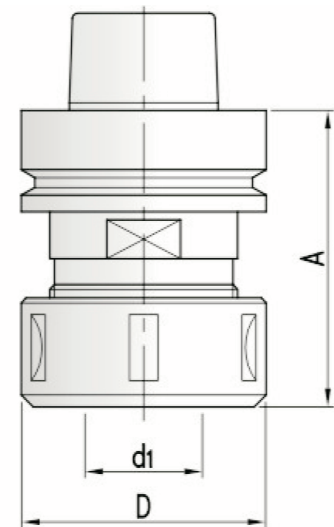
Nr.		Ref.
1	SK30 IMA, MAKA, REICHENBACHER, WEEKE	3766.01
2	SK40 IMA, MAKA, REICHENBACHER	3766.02
3	SK30 BIESSE até 9/92	3766.03
4	SK30 BIESSE após 9/92, MASTERWOOD (motor HSD)	3766.04
5	SK30 ALBERTI, MASTERWOOD (motor Colombo)	3766.05
6	ISO30SCM, MORBIDELLI	3766.06
7	BT35Heian, Shoda	3766.07
8	ISO30 CMS	3766.08
9	SK30Stemm, Esseteam (motor Elte)	3766.09



Porta-piças de precisão 3762
Portapinzas de precision

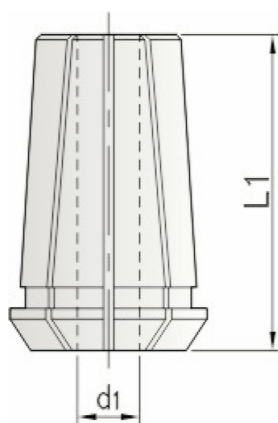
	D	A	d1	Ref.
HSK 63F	50	70	6-20(ER32)	3762.060.070.60
	63	76	6-25(ER40)	3762.063.076.60
	60	76	6-25(462E)	3762.060.076.60
	60	115	6-25(462E)	3762.060.115.60
CMS	50	65	6-20(ER32)	3762.050.065.60
	63	75	6-25(ER40)	3762.063.075.60
ALBERTI	50	50	6-20(ER32)	3762.050.360.60
	63	65	6-25(ER40)	3762.063.365.60

PINÇA NÃO INCLUIDA
Sin pinza



ACESSÓRIOS - Piezas de recambio

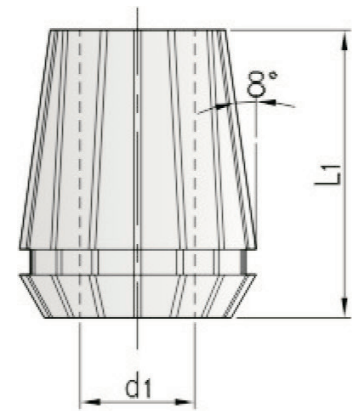
	D	Dim.	Ref.
Fêmea de aperto	50	M40x1.5(ER32)	3762.50
	63	M50x1.5(ER40)	3762.63
	60	M48x2 (462E)	3762.60
Chave de unha	50	45/50	5302.302
	60	58/62	5302.303
	63	68/75	5302.304



D	A		Ref.
6	52	DIN6388 /462E	3765.035.152.06
8	52		3765.035.152.08
10	52		3765.035.152.10
12	52		3765.035.152.12
14	52		3765.035.152.14
16	52		3765.035.152.16
18	52		3765.035.152.18
20	52		3765.035.152.20
25	52		3765.035.152.25



d1	D	L1	Ref.
Até 10mm			
4	17	27.5	426E/ER16
6			3764.02
8			3764.03
10			3764.04
Até 12mm		Até 12mm	
6	21	31	428E/ER20
8			3764.06
10			3764.07
12			3764.08
Até 16mm		Até 16mm	
6	26	34	430E/ER25
8			3764.10
10			3764.11
12			3764.12
14			3764.13
16			3764.14
Até 20mm		Até 20mm	
3	33	40	470E/ER32
4			3764.16
5			3764.17
6			3764.18
7(6.35)			3764.19
8			3764.20
10			3764.21
12			3764.22
13(12.7)			3764.23
14			3764.24
16			3764.25
18			3764.26
20			3764.27
Até 25mm			
6	41	46	472E/ER40
7(6.35)			3764.29
8			3764.30
10			3764.31
12			3764.32
13(12.7)			3764.33
14			3764.34
16			3764.35
18			3764.36
20			3764.37
25			3764.38
			3764.39



IMPORTANTE: USAR FERRAMENTAS COM ENCABADOURO CILÍNDRICO A OCUPAR A TOTALIDADE DA PINÇA.

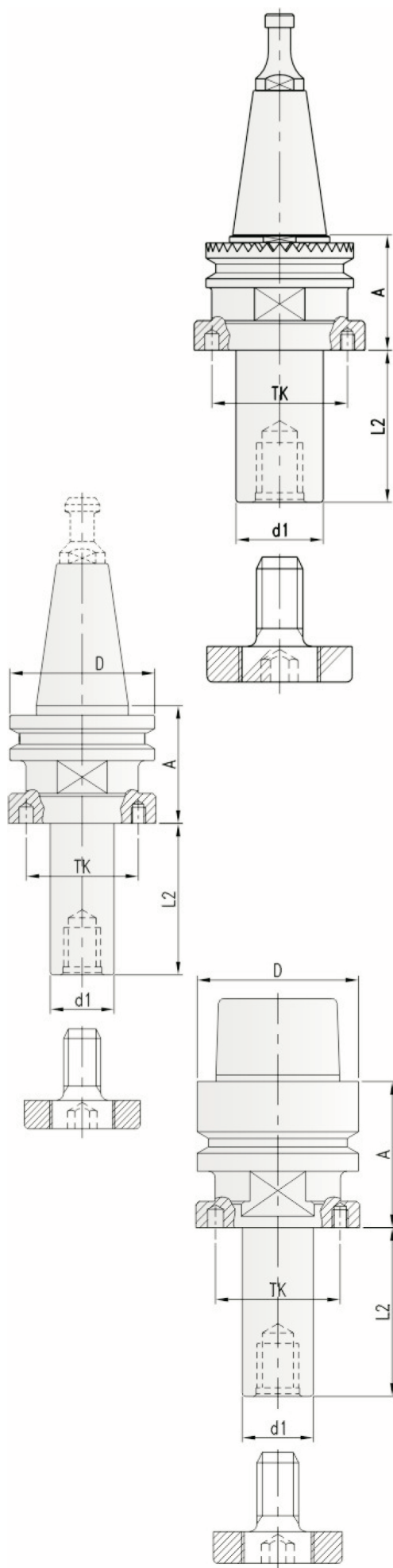
Atención: el mango de la herramienta debe ocupar la totalidad de la pinza.



IMPORTANTE: COM FERRAMENTAS DE HÉLICE NUNCA COLOCAR A HÉLICE DENTRO DO APERTO DA PINÇA.

Atención: Con herramientas de hélice nunca colocar la hélice dentro del apriete de la pinza.





d1	L2	A	TK	S	Pino	Ref.
SCM, Morbidelli						
20	40	45	32	ISO30	6	3767.020.040.65
	70	45		ISO30	6	3767.020.070.65
30	40	45	48	ISO30	6	3767.030.040.65
	80	45		ISO30	6	3767.030.080.65

FORNECIDO SEM ANILHAS - Suministrado sin anillos

d1	L2	A	TK	S	D	Ref.
IMA, MAKI, REICHENBACHER, WEEKE, BIESSE, ALBERTI, STEGHERR, ETC.						
20	40	42	32	SK30	50	3767.020.140.65
	70					3767.020.170.65
20	40	42	32	SK40	63.55	3767.020.140.66
	70					3767.020.170.66
30	40	42	48	SK30	50	3767.030.140.65
	80					3767.030.180.65
30	40	42	4	SK40	63.55	3767.030.140.66
	80					3767.030.180.66

FORNECIDO SEM ANILHAS E SEM PINO RETENTOR - Suministrado sin anillos ni enganche

d1	L2	A	TK	S	D	Pino	Ref.
CMS							
20	40	42	32	ISO30	46	8	3767.120.140.65
	70					8	3767.120.170.65
30	40	42	48	ISO30	46	8	3767.130.140.65
	80					8	3767.130.180.65

FORNECIDO SEM ANILHAS - Suministrado sin anillos

d1	L2	A	TK	S	D	Ref.
CMS						
20	70	45	32	HSK63F	63	3767.020.270.60
30	80	45	48	HSK63F		3767.030.280.60
Série Longa						
20	40	80	32	HSK63F	63	3767.020.140.60
	70	80		HSK63F		3767.020.170.60
30	40	80	48	HSK63F	63	3767.030.140.60
	80	80		HSK63F		3767.030.180.60

d1	L2	L1	TK	S	Ref.
20	40	98	32	20X50	3767.020.140.20
	40	108		25X60	3767.020.140.25
20	70	128	32	20X50	3767.020.170.20
	70	138		25X60	3767.020.170.25
30	40	98	48	20X50	3767.030.140.20
		108		25X60	3767.030.140.25

d1	L2	L1	TK	S	Ref.
22	4	69	36	25X60	3767.022.104.25
30	4	69	48	25X60	3767.030.104.25

ACESSÓRIOS - Piezas de recambio

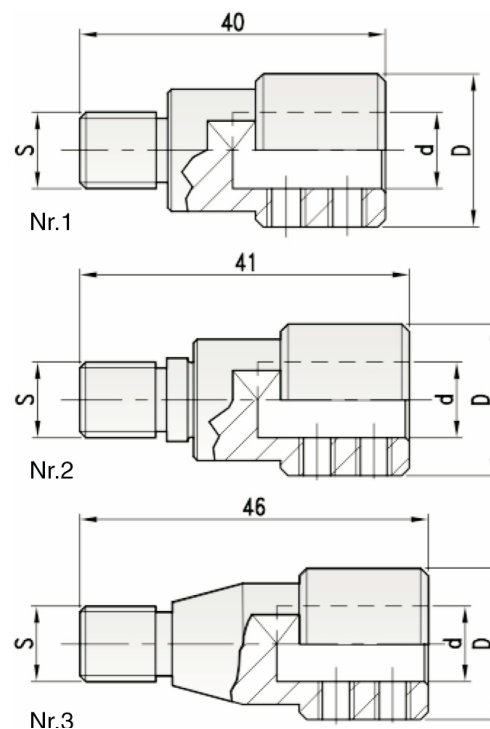
Dim.	Ref.
Parafuso	M4x12
Chave em T	SW3
	P3767.01
	5302.102



Nr.	D	d	S	Ref. Esq.	Ref. Drt.
Ayen, Holzma, Mayer, Knoevenagel, Torwegge, etc.					
1	20	10	M8	4082.01	4082.02
1	20	10	M10	4082.03	4082.04
Morbidelli, Weeke, Torwegge, Biesse, Masterwood, Vitap, etc.					
2	20	10	M8	4082.05	4082.06
2	20	10	M10	4082.07	4082.08
Bilek, Vitap, Alberti, Balestrini, Schleicher, Busellato, etc.					
3	20	10	M8	4082.09	4082.10
3	20	10	M10	4082.11	4082.12

ACESSÓRIOS - Piezas de recambio

	Dim.	Ref.
Parafuso	M5x5	5106.003
Chave em T	SW2.5	5302.101

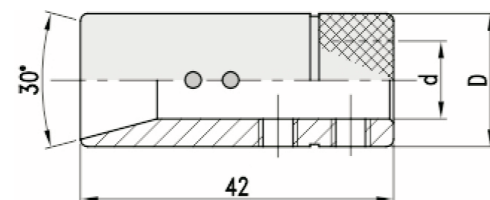


Buchas de aperto rápido **4082**
Portabrocas de conexión rápida

D	d	Ref.
Vitap		
18	10	4082.50

ACESSÓRIOS - Piezas de recambio

	Dim.	Ref.
Parafuso	M5x4	5106.003.04
Chave	SW2.5	5302.003

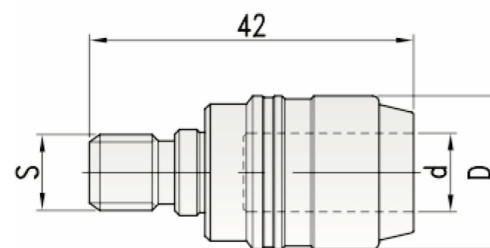


Buchas auto-bloqueo - Portabrocas auto-bloqueo

D	d	S	Ref.
20	10	M10	4082.60

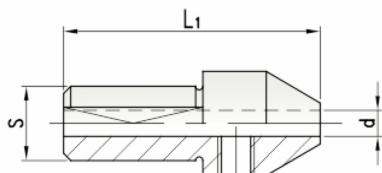
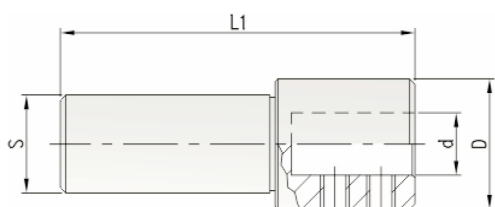
PARA BROCAS COM UMA FACE NO ENCAVADOURO (EXEMPLO: BROCAS DE MULTIFURADORA), NÃO NECESSITA DE APERTAR E DESAPERTAR PARAFUSOS.

Para brocas con plano de aprieto en el mango (ej: brocas de taladro múltiple), reduce el tiempo de substitución de las herramientas no teniendo necesidad de apretar y aflojar tornillos de fijación.





4081 Adaptadores Adaptador



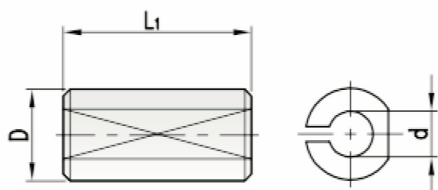
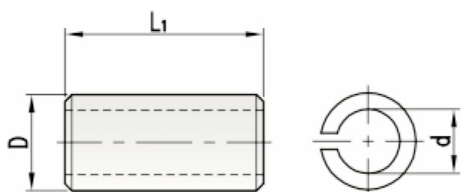
D	d	S	Ref.
20	6	18	4081.020.006.18
20	8	18	4081.020.008.18
22	10	18	4081.022.010.18
22	12	18	4081.022.012.18

d	d	S	Ref.
2	38	10	4081.002.038.10
2.5	38	10	4081.025.038.10
3	38	10	4081.003.038.10
3.5	38	10	4081.035.038.10
4	38	10	4081.004.038.10
4.5	38	10	4081.045.038.10
5	38	10	4081.005.038.10

ACESSÓRIOS - Peças de recambio

	Dim.	Ref.
Parafuso	M5x5	5106.003
Chave	SW2.5	5302.006

4083 Casquilhos Casquillos



D	L1	d	Ref.
8	25	6	4083.01
10	25	8	4083.02
12	25	6	4083.03
	25	8	4083.04
	25	10	4083.05

d	L1	S	Ref.
2	23	10	4083.06
2.5	23	10	4083.07
3	23	10	4083.08
3.5	23	10	4083.09
4	23	10	4083.10
4.5	23	10	4083.11
5	23	10	4083.12
6	23	10	4083.13
7	23	10	4083.14
8	23	10	4083.15



araujo&silva
ferramentas de corte

www.araujosilva.pt